

INTERIOR DESIGN



SCENIX SERVICES
DESIGN AND BUILD

INSPIRED BY NATURE



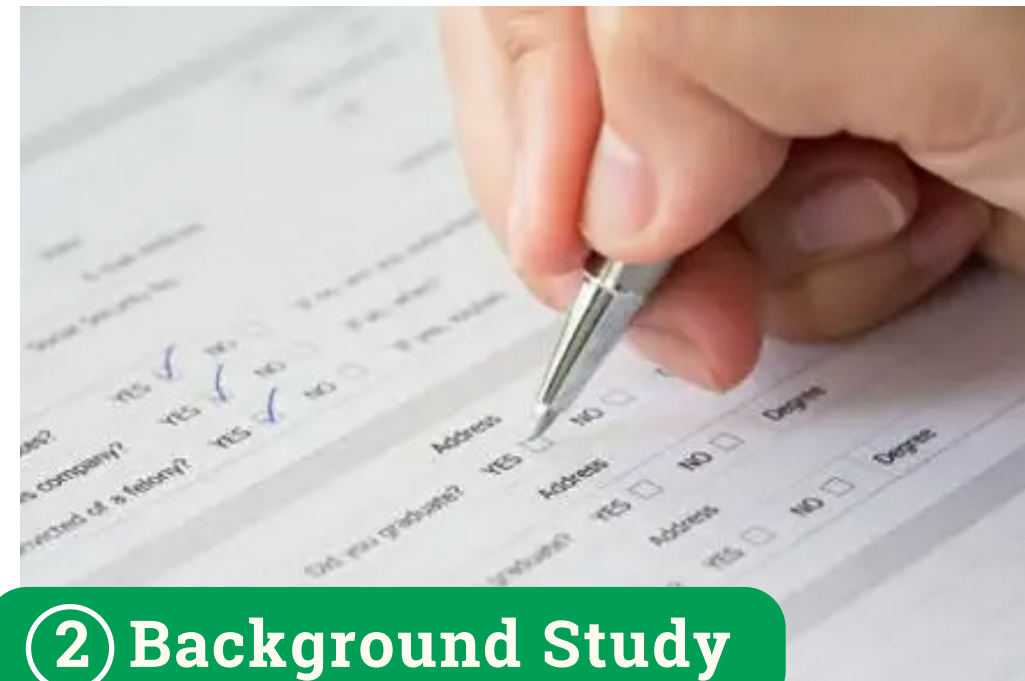
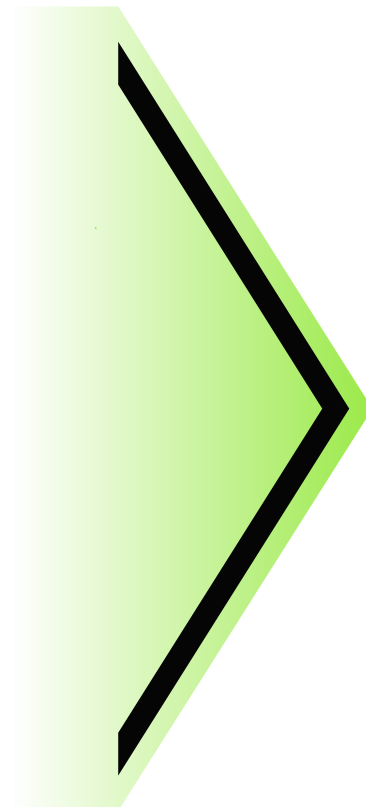
OUR WORKFLOW

WHAT TO EXPECT?



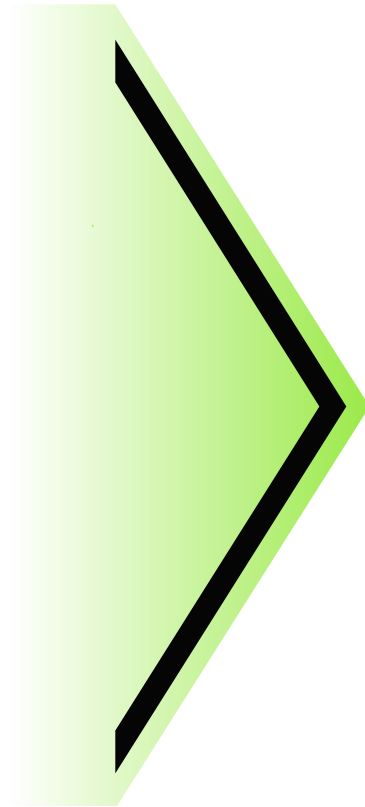
① Site Visit

We will come to your house to know more on the house layout. Measurement will be taken during this site visit.



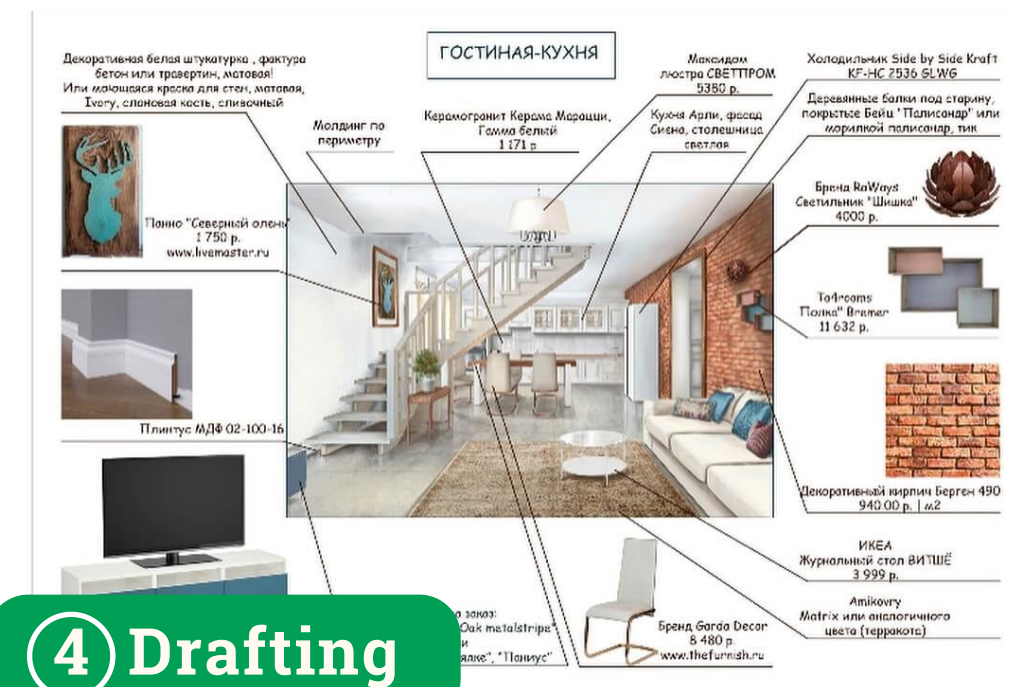
② Background Study

We will make sure that our design can also improve our clients' daily life. Therefore, we will discuss on what you need and want, and create designs that will solve your daily problems.



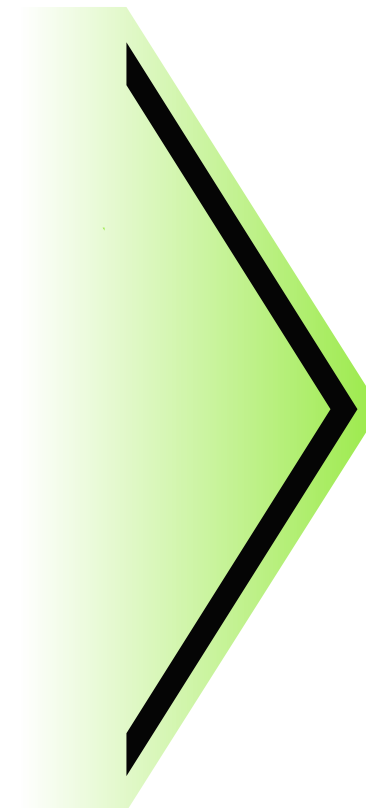
③ Consultation

There are hundreds of interior design concepts that are available for you to choose. We will help you making the best choice that suits your taste and needs.



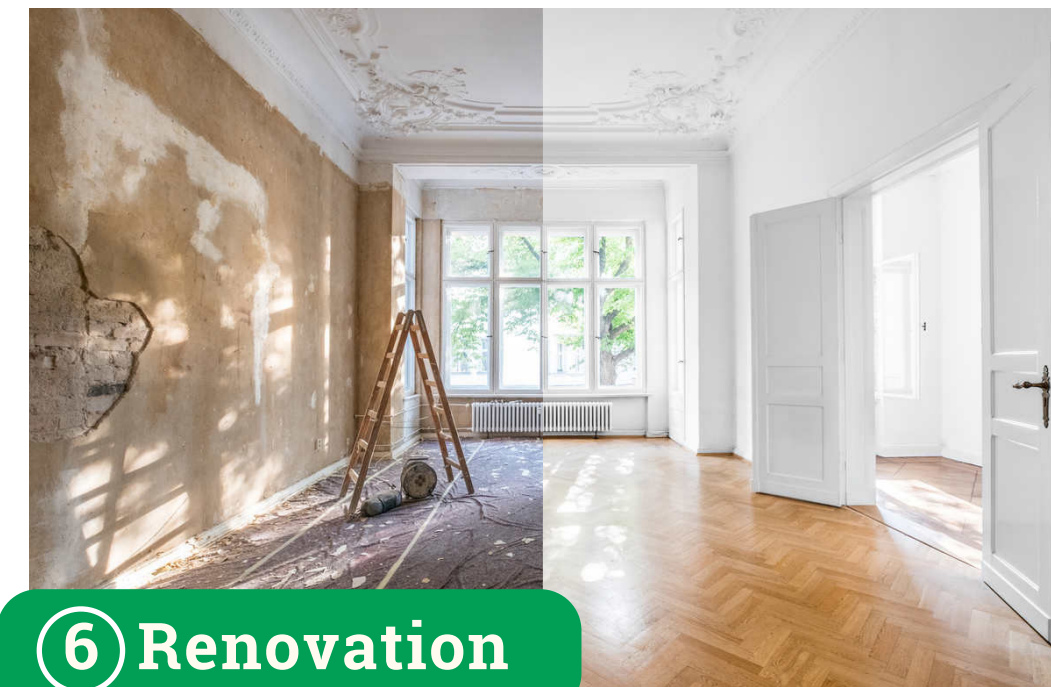
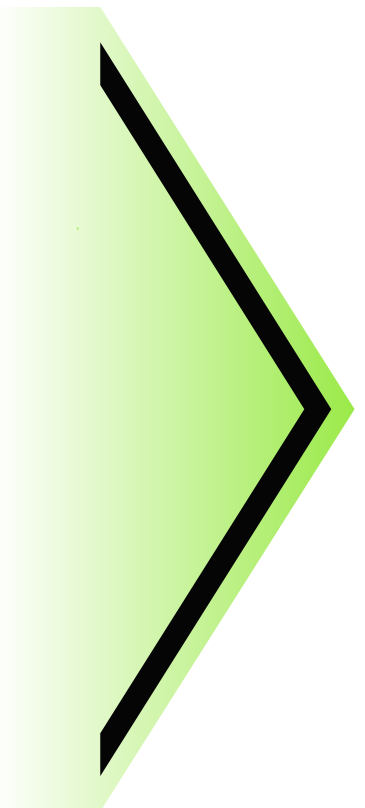
④ Drafting

We will come out with mood boards, 2D plan and 3D render draft. Client will then review the draft and their feedback will be taken. Amendments will be made based on client's feedback.



⑤ Finalization

After clients are satisfied with the amendments, we will come out with the final 3D render and detailed drawings. These documents will be the guideline for the renovation later.



⑥ Renovation

We will discuss on the scheduling of the renovation with the client. Then we will start the renovation based on the agreed schedule.



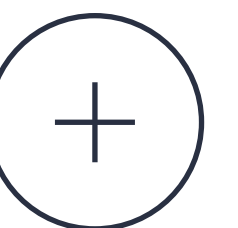
Private Residence. Tbilisi, Georgia - 2021

TAKE A PEEK INSIDE

INTERIOR DESIGN

Interiors by SCENIX are characterized by strong conceptual legibility, ingenuity, and a rigorous approach to detailing – all underpinned by the principles of humane, enduring, sustainable design and never-ending innovation.

CREATING HEALTHIER ENVIRONMENTS





BLUE HUES

Located in one of the most attractive districts of Tbilisi, this apartment is distinguished by the elements of its urban interior and unique range of colors and materials, which combine classic elements with modern trends. Natural light flows freely into the blue-shaded space, creating a calm and sophisticated environment.



**ELEGANCE AND
SOPHISTICATION REDEFINED**



UNIQUE COLOR PALETTE

The main goal of this project was to create a sophisticated and elegant design for a luxury real estate market.



TO ELEGANTLY EXHIBIT ALL ASPECTS OF CLASSICAL DESIGN, WE UTILIZED SOPHISTICATED ELEMENTS AND SIMPLIFIED THE COMPLEX LINES BY INTERPRETING CLASSICAL BEAUTY WITH A MODERN APPROACH.

HOUSE WITH UNIQUE CHARACTER

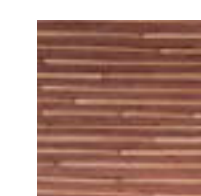
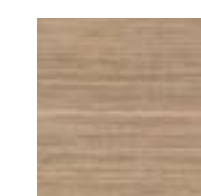
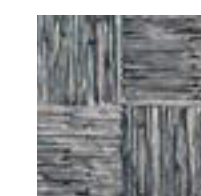
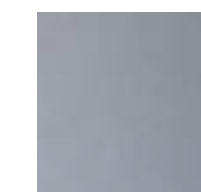
Upon first look into the living room, you are instantly struck by the warm wood ceiling and sweeping wide windows. The color is calming, and furniture is minimal. There is nothing overcomplicated to distract the eye and exhaust the mind, yet there is a crisp and confident sense of style, one of complete peaceful self-assurance. The dining room and living room are wide open with a dominant fireplace clad in natural stone, creating a timeless and unique design.





DELIGHTFULLY COMFORTABLE

Each detail of the design serves one purpose – to feel the comfort and coziness of home. Soothing color pallet, rich wooden accents, natural shades and materials altogether create a unique space to relax the mind and enjoy every day.



ADDING DEPTH THROUGH **CONNECTIONS** **WITH ANCIENT ART**

One of the main features of the interior, an extensive collection of works of art owned by the client, blends naturally in different spaces and creates an integral part of the design. All the decorations belong to different periods of time and various cultures. They possess character and deliver stories from the past. Crafted with natural materials—metal, stone, copper, and wood—the decorations bring a special aura to every room of the house through their antiquity, ornaments, and characteristics of different cultures.

Art can amaze, entertain and entice. It nourishes the spirit, enriches the senses, and challenges the mind.

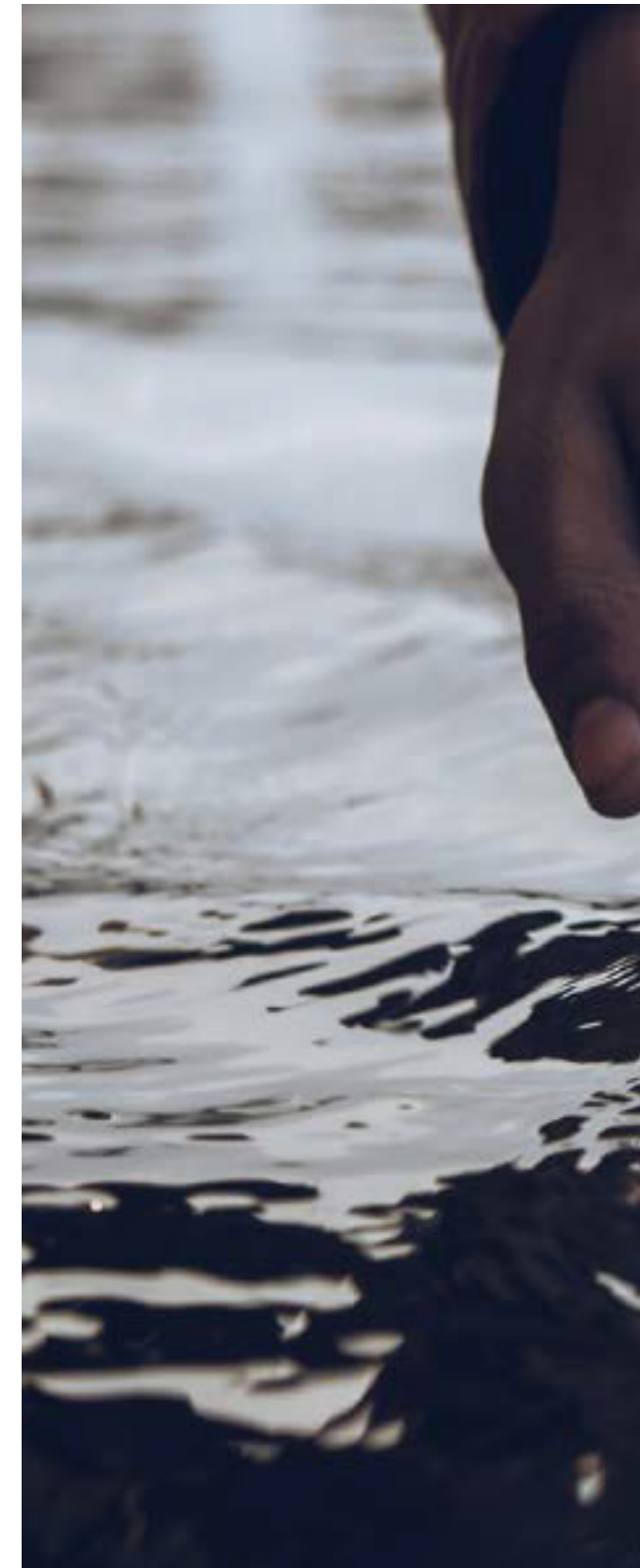




**PERFECTION IS DELIVERED
IN THE DETAILS**

A SENSE OF PLACE

Thorough understanding of context, function, surrounding is engined by individual approach to deliver unique sense of the given place.





TIMELESS & TAILORED

A HOME YOU CAN TRULY
MAKE YOUR OWN

The blue-shaded, feature marble wall draws immediate attention, conveying the character of the apartment—both avant-garde and calm—an ideal balance having been achieved. The interior of the apartment combines elements of classic design and dynamic, modern accents.



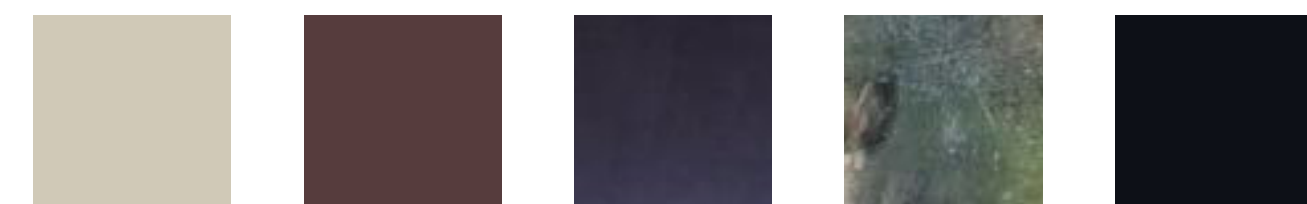
**FINELY CRAFTED
LUXURY**



A PRIVATE RETREAT

DESIGNED TO DELIVER COMFORT AND PRIVACY

Meticulously selected materials, textures and earthy color pallet, each and every element of the interior ensures the creation of a comfortable and healthy environment. The space rethinks the need for privacy, relaxation and mindfulness.





M ODERN LIVING

With the aim to reinterpret traditional design standards, this apartment features the intersection of spaces, surfaces, and compositions that are functional and create a bespoke visual effect. White marble flooring, that is present from the entrance to the living room, is perfectly balanced with wooden decorative panels on the walls to bring more warmth and elegance into this minimalistic interior.

**SIMPLY FEEL BETTER
STEPPING OUTSIDE**

[+ CLICK FOR THE LINK](#)



**IMPRESSIVE
SIMPLICITY**

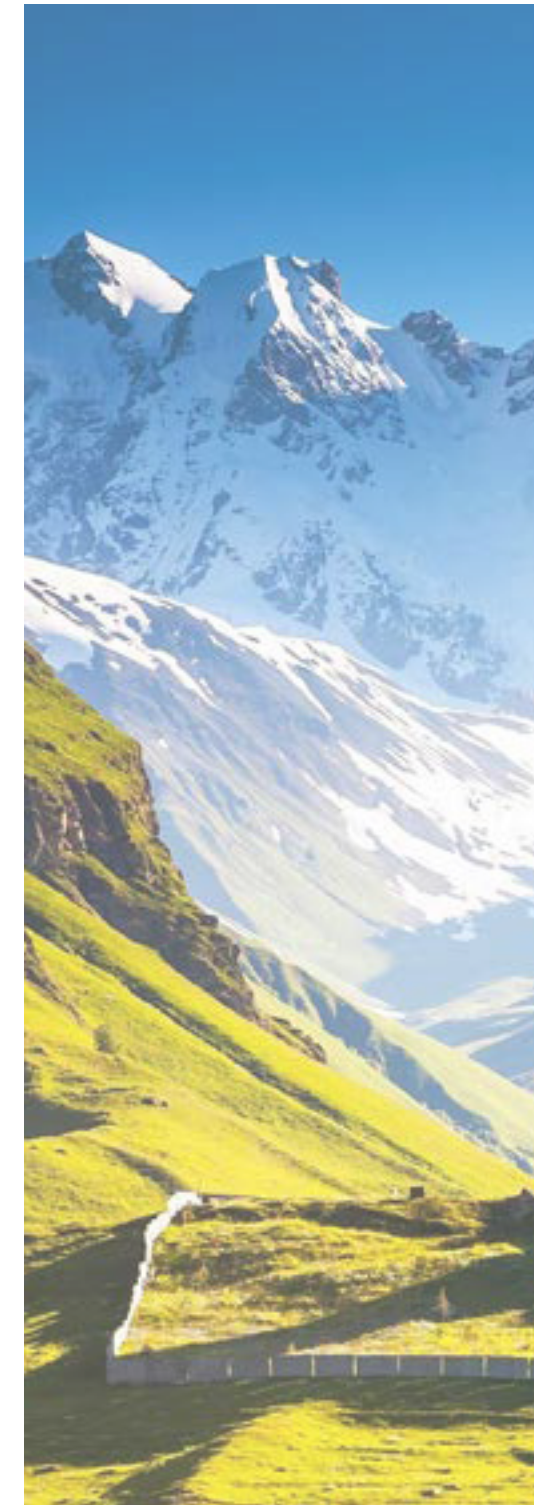


TRANQUILITY MADE PERSONAL

The modern furniture and materials in the bathroom suit the overall style of the apartment with decorative marble walls and a warm color palette. The most important and eye-catching element of this bathroom is the Onyx natural stone wall, which emphasizes the precious and unique design of the interior and at the same time creates the perfect atmosphere for relaxation.

CONTEXT & LOCATION

One of the key aspects and characteristics of our methodology is the deep understanding and consideration of the project location, its traditions, culture and surrounding context. This gives us the ability to clearly analyze the specific parameters of any given location, its function and create unique designs that can seamlessly blend within the given context.



HOUSE RADIATING ELEGANCE

A WARM & PERSONAL WELCOME

Exquisite details, adequate performance, and flawless elegance are present throughout this design concept. The interior of the house is distinguished by precious materials as well as original shapes and textures. These create a sophisticated, elegant, and harmonious environment for the residents.



Main Vestibule

CLICK FOR THE LINK [+](#)



AT THE CENTER OF IT ALL...

CREATING SPACES WITH FREE FLOW AND LOCAL TOUCHES

Every detail in the overall style of the interior reflects a refined design integrated with modern technologies. One of the most eye-catching design elements of this interior is the beautiful bar which is made of white Alabaster glass—illuminated from the inside—creating an unforgettable impression. With the original shapes, delicate color palette, carefully selected lighting and integration of natural materials, an ideal space for relaxation is achieved.



Private Bar Area

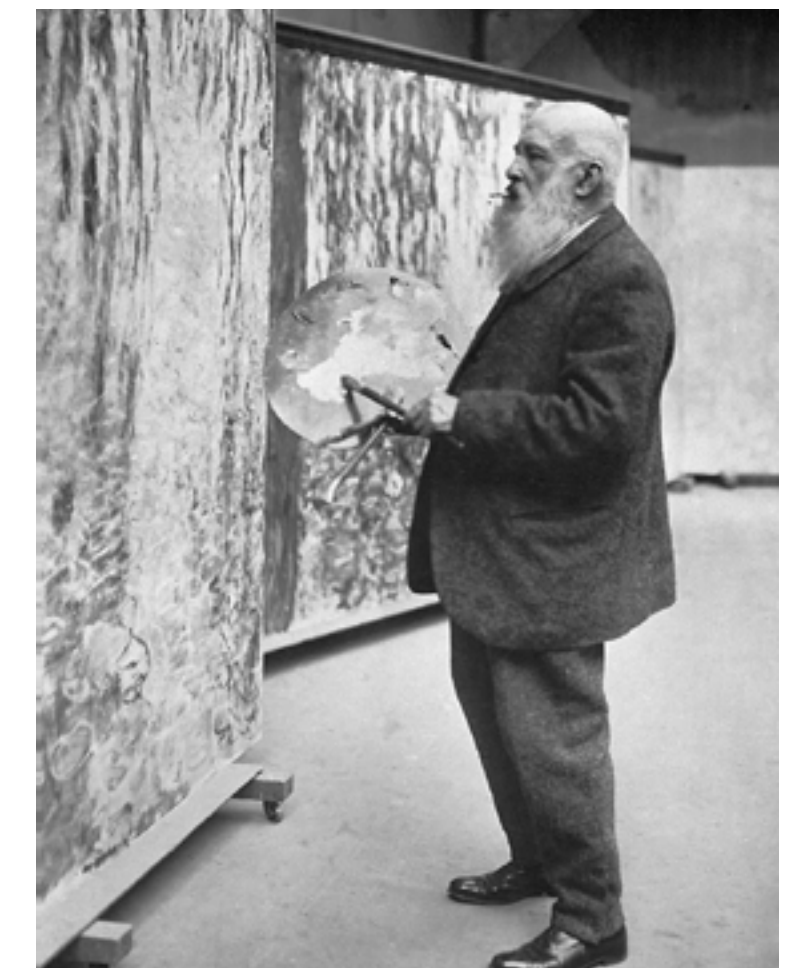


PRIVATE SANCTUARY

Master Suite

THE COLORFUL WORLD OF CLAUDE MONET

Bringing a reinterpretation of Monet to the interior and delivering tranquil and soothing aesthetics, guarantees comfort and relaxation with a sense of persona.



Claude Monet painting



A PLACE THAT INSPIRES WELLNESS

Every area of the house radiates a touch of luxury, from the entry to bathroom spaces, set off by sumptuous materials and exquisitely crafted finishes. Elegance and subtlety are vibrating from the details. The synthesis of exquisite materials, modern and classical styles and diverse textures create distinguishable atmosphere with a sense of taste and uniqueness.



SOPHISTICATED STYLE

Our interior designers have focused their attention on the finest details and included contrasting features to create a completely unique space. The distinctive surroundings stand out alongside the elegant marble-effect work surfaces and a monochromatic palette with quirky brass accents. The result is a triumph of practicality and persona.

COMFORT ENRICHED
MINIMALISM

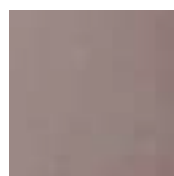
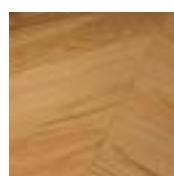
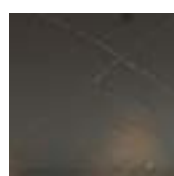
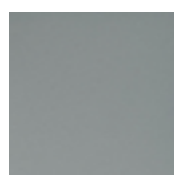
✚ [CLICK FOR THE LINK](#)



REFINED LIFESTYLE

THINKING BEYOND THE ORDINARY

Modern, linear shapes and original elements create a comfortable and distinctive environment for the residents. The elegant, refined interior is distinguished by aesthetic and functional solutions.



Bedroom Suite



DESIGNED FOR LIFE

INDIVIDUALITY

We are committed to create spaces with strong individualistic character. Our design methodology evolves around seeking an inspiration in nature whether it is texture, color, composition, lighting or general ambiance. Design process and direction is often influenced by individual personalities, their vision and personal understanding. We seek to create an individual character in every single aspect of our design.



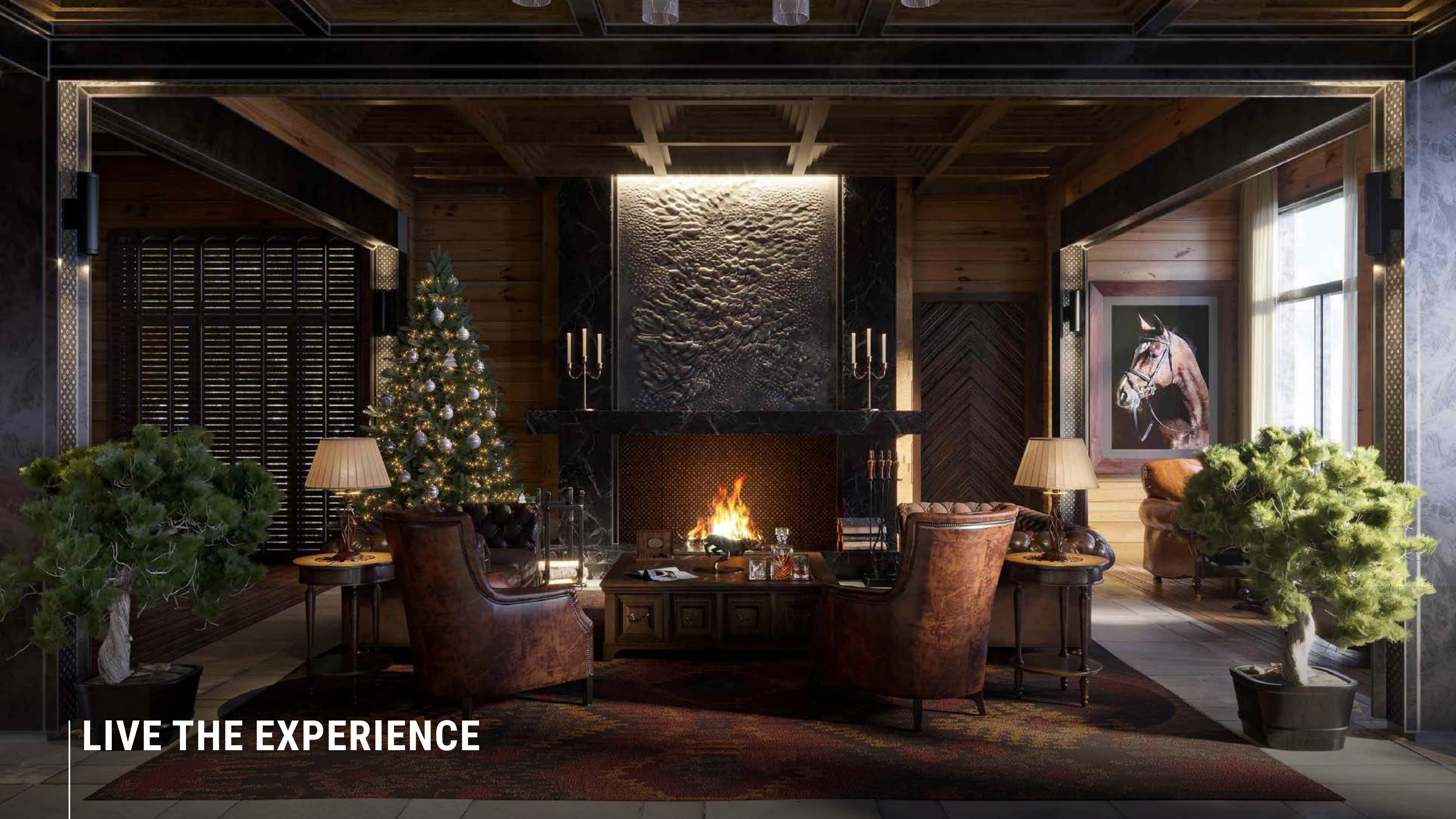


COZY & ELEGANT

A FIRST IMPRESSION
THAT LEAVES NO SECOND
THOUGHTS

The main goal of this interior design project was to create a special context integrated with the environment while taking into account the architectural values of the existing house. This interior is distinguished with a custom-designed fireplace featuring distinctive artwork.

[+](#) CLICK FOR THE LINK



LIVE THE EXPERIENCE



**INSPIRED BY A CONTINUOUS
CYCLE OF LIGHT AND SHADOW**

R ESTAURANT “KALAKI”

One of the main aims of this project was to incorporate different architectural styles into one area while creating a unique place for special occasions. The fundamental design and concept of the project surpasses the typical designation of a luxurious restaurant and its main function. It offers an unparalleled meeting space where people socialize in a magical atmosphere, allowing them to escape from hectic city life.

TRAVELING WITHIN
SPACE AND TIME





A CITY WITHIN A CITY



A SPECIAL AMBIANCE

Combining luxurious European settings and styles with local traditions, Restaurant "Kalaki" offers an extraordinary environment for gatherings, relaxation, and communication. The restaurant provides a totally unique experience, creating unforgettable memories for its visitors. Its story is told through classic materials, lighting, and historical context, which is purposefully imitated in the interior.





**AN IMMERSIVE CULINARY
EXPERIENCE**



CANOPY BY HILTON

UNIQUE ATMOSPHERE INFUSED
WITH LOCAL CHARACTER.

We have challenged ourselves to transmit Canopy approach of guest experience into our design elements, enriching with cultural vibrancy ensuring guests stay unique and memorable.

We incorporated the accents of the neighborhood into the design, In essence, we have INVITED THE CITY inside the guestrooms, giving the guest the opportunity to unwind and feel welcomed in 1500 years old Tbilisi with its rich history and unparalleled cultural values, and well-known hospitality.



ENJOY EXPLORATION

The area is a focal point for cultural tourists, wine enthusiasts, and anyone who is curious to take in new experiences.

GRAB A GLASS OF DELICIOUS
GEORGIAN WINE, CHOOSE A
BOOK, AND DIVE INTO THE
EXPLORATION OF LOCAL
CULTURE



EAT, DRINK & SMILE

Canopy Central breakfast area



INVITING AND WELCOMING SPACE TO UNWIND

WELL-BEING

The cornerstone of our design vision is based on the notion of creating healthy environments. Carefully considered various factors are affecting habitants health and their well-being, where we challenge ourselves daily to create a unique environment with long-lasting values where well-being is the main consideration.





RESTAURANT

“AVIATOR”

WHERE LOFT & AVIATION MEET

The harmonious combination of different architectural solutions is the main concept of this interior. open space, dark tones, concrete, leather, and solid wood textures create a cozy, comfortable and distinctive environment. Strict, minimalist, and sparse interiors feature functional, vintage furniture. Decorative, handmade partitions, concrete columns, a natural stone bar and an original, exclusively made metal fireplace, create an unforgettable experience.



CLEAR FOR TAKE OFF



EVER LASTING IMPRESSION



WINE CELLAR

EXCLUSIVE ENVIRONMENT
INSPIRED BY CULTURAL
HERITAGE

The main concept behind the approach to designing the wine shop was 8000 wine making history of Georgian culture and tradition. The design intention was to highlight the production character of a vineyard referenced on earthy materials: metal, bricks, wood, and clay. A massive stone table and a wine shelf, shaped like a 5th-century Georgian ornament, are just part of the interesting features visitors can discover while walking around the cellar.

[+](#) CLICK FOR THE LINK



**INSPIRED BY 8000 YEARS OF
WINE MAKING TRADITION**



**DETAILS THAT CREATE
A UNIQUE AMBIANCE**



**ADDING DEPTH THROUGH
CONNECTIONS WITH THE PAST**



SCENIX SERVICES
DESIGN AND BUILD
